

ISAAC NEWTON INSTITUTE ENVIRONMENTAL ACTION PLAN

The Isaac Newton Institute for Mathematical Sciences (INI) is committed to protecting and enhancing the environment and fully supports the University of Cambridge's commitment to making a positive impact through outstanding environmental sustainability performance.

The Institute recognises the need to protect the environment in which we live and work and to use natural resources prudently, in order to safeguard resources for future generations and to work towards its commitment to sustainable development.

The Institute has outlined its commitment and the ways in which it will act to improve its environmental performance within the INI Environmental Action Plan.

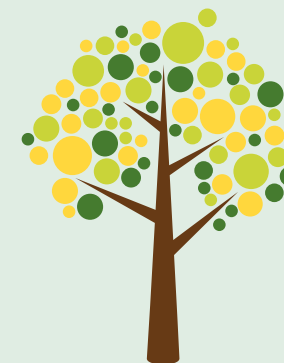
The Institute has made a number of commitments within the Environmental Action Plan to encourage staff to think about their impact on the global issues of climate change and sustainable development.

Responsibility

The INI Green Team is committed to improving the Institute's environmental performance. The team is responsible for sharing information. Each member of INI staff has a responsibility to follow the guidance set out in this action plan.

Monitoring

This Environmental Action Plan will be reviewed at the start of each academic year by the INI Green Impact Team.



ENVIRONMENTAL ACTION PLAN COMMITMENTS

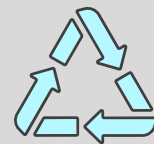


1.

Lead by example and use its influence to actively encourage responsible environmental practice and raise awareness and understanding of environmental issues among its staff, participants, suppliers and contractors. Support the activities of the INI Green Team in delivering the University's Green Impact scheme.

2.

Actively manage waste through elimination, reduction, reuse and recycling, to reduce waste sent to landfill. Ensure provision of appropriate recycling infrastructure.



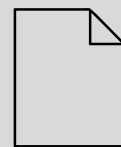
3.

Conserve water through efficient use and management.



4.

Source paper and printed materials from Forest Stewardship Council-certified suppliers.



5.

Respond to the challenges posed by climate change by aiming to reduce energy and carbon emissions from its own activities.



6.

Promote viable and accessible sustainable travel options to staff and participants for travel to work, travel at work and travel for work which results in a reduction of carbon emissions. Encourage walking, cycling, use of public transport and car sharing.



7.

Provide video-conferencing facilities to reduce the need to travel for meetings where possible.



8.

Provide appropriate training and guidance to staff within the Institute who are involved in purchasing decisions, to ensure sustainable procurement.



9.

Staff to have access to opportunities provided by the Environment & Energy team to develop their knowledge, skills and understanding relating to sustainability matters, to ensure continuous improvement of the overall environmental performance across the Institute.



Isaac Newton Institute
for Mathematical Sciences

